

Publish Date: 24.05.2021 | Rev no: 69

PowerMAX+ Cat.6A ezi-JACK Shielded Jack

DINTEK PowerMax+™ Cat.6A fully shielded ezi-JACK180™ offers superior alien crosstalk suppression, excellent insertion loss, and provides enhanced electromagnetic interference (EMI) protection by utilizing robust die cast zinc alloy connector body housing.

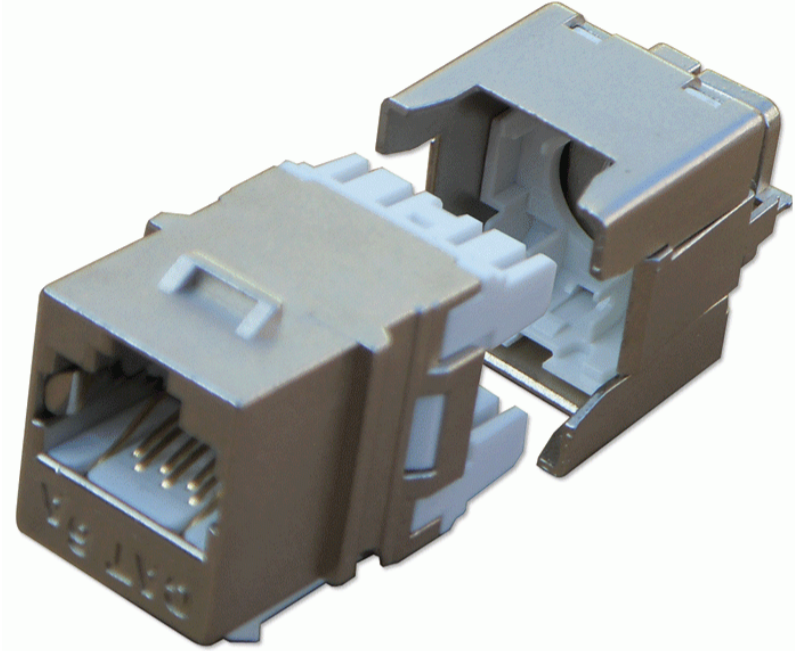
The shielded connector is dual color coded for either 568A or 568B wiring schedules. Being specifically designed for high-speed data transmission, the DINTEK PowerMax+™ Cat.6A fully shielded ezi-JACK180™ is also backwards compatible with shielded Cat.6 and Cat.5e systems.

Features

- Meets all requirements of ANSI/TIA-568-2.D for Cat.6A
- Draft ISO/IEC 11801 amendment 2, Cat.6A
- Draft ISO/IEC 60603-7
- IDC connector with large space of each pair to improve crosstalk
- Accepts 22~24AWG, stranded or solid wire
- Special CAP design reduces external crosstalk
- Modular jack meets FCC part 68
- Wiring: T568A/B

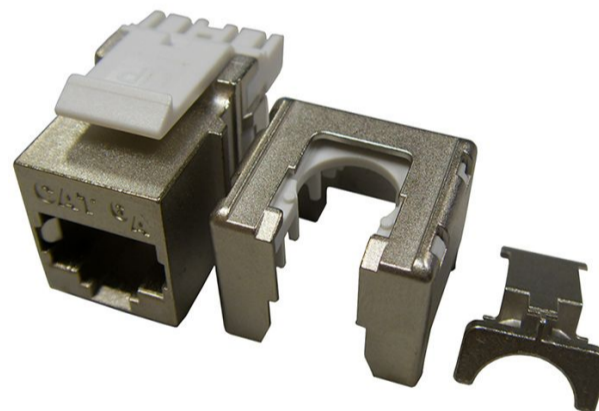
Applications

- 10GBASE-T Ethernet
- 100BASE-TX Fast Ethernet
- 1000BASE-TX Gigabit Ethernet
- 1000BASE-T Gigabit Ethernet
- 10BASE-TX Ethernet
- ATM CB1G
- 155/622 Mbps ATM
- 100 Mbps TP-PMD
- 100VG-AnyLAN
- 4/16 Mbps Token Ring
- Voice



Standards Conformance

- UL, C(UL), ETL Verified
- ISO/IEC11801 2nd edition
- ANSI/TIA Standard 568-2.D
- CENELEC EN 50173



Ordering Information

Product Number	Product Name	Orientation	Color	Std Pkg Qty
1305-05010	PowerMAX+ Cat.6A ezi-JACK Vertical Shielded Jack	Vertical	Silver	1pcs/PE bag

Technical Specifications

Construction

Body

Connector Housing High Impact Flame-Retardant Plastic

Standard UL94v-0 rated

Front Connection

Contact Type Spring Wire

Material Phosphor bronze alloy plated with 50 micro-inch of gold over 70~100 micro-inch of nickel

Rear Terminals

Terminal Type IDC

Material	Phosphor Bronze alloy with 10 micro-inch 100% Sn alloy
Physical Ranges	
Temperature Range	Storage : -40 to +70°C Operational : -10 to +60°C
Relative Humidity	Operational : Max. non-condensing 93%
Retention	50N (11 lbf) for 60s ± 5s
Insertion/Extraction Life	750 cycles minimum
Number of IDC Terminations	200 minimum
Total Mating Force	800 grams for 8 wire leads min
Electrical	
Insulation Resistance	500 MΩ min.@ 100V d.c
Dielectric Withstanding Voltage	1000 V d.c. or a.c. Peak Contact to Contact @ 60 Hz for 1 MIN.
Spring Wire Contact Resistance	20 mΩ Max
Voltage/Current Rating	150VAC/1.5A
IDC Contact Resistance	2.5 mΩ Max

Terminal Demonstration

Cat.6A Vertical Shielded ezi-JACK

Strip 40mm of sheath from cable using stripper then roll back the braid onto cable so it is out of the way

Separate the four pairs and remove the foil wrap from around each pair

With twists right up to the IDC terminals, load the jack terminals with the wires in the correct color order

Insert the jack into the Yellow F Tool with the cable protruding side ways. Guides on the jack will fit the tool

Squeeze handles together terminating and trimming wires

Check terminations, then place top cap onto jack with the slot facing the wire, and click into place

Move the cable into a straight up and down direction, and then tidily push braid up and under the shielded tag at the back, twisting the braid as you push it up

Take the other half of the shield clamp and insert into main body, then push down until it clicks into place

Finally, take the supplied cable tie and secure the two halves of the clap together

DINTEK Electronic Limited

台北市中山區中山北路二段96號 嘉新第二大樓五樓N511
 N511, 5F, 2nd Bldg, No. 96, Sec. 2, Zhongshan N. Rd. Zhongshan Dist., Taipei City 10449, Taiwan
 P: +886-2-22997898 E-mail: sales@dintek.com.tw W: www.dintek.com.tw

1305-05010